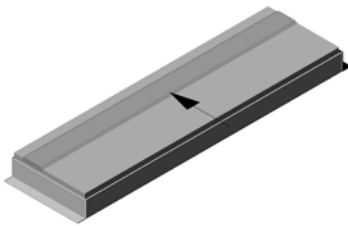
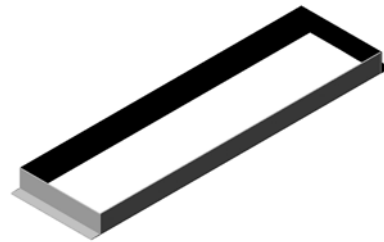


Assembly instructions: take-off board frame

Thank you very much for choosing a Sport-Thieme product. We want to make sure that you can enjoy this product, so here is some important advice for your safety as well as for the use and maintenance of the equipment. Please read these instructions carefully before you assemble and use the equipment:



III. 1: frame with take-off board



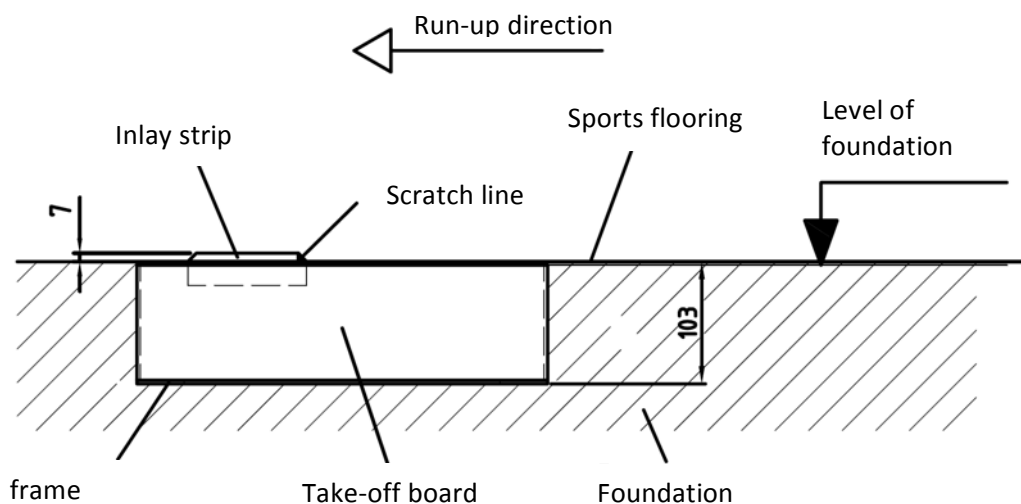
III. 2: aluminium frame

Assembly instructions

The frame is set into an appropriate foundation. Ensure that the frame is connected to a drainage layer or drainage pipe.

The take-off board (Art.-Nr.: 123 6806) which is fitted into the frame shall be installed so that its surface is level with the surface of the runway. The height of the frame for the take-off board is 100 mm. The frame must be set into the foundation accordingly. Once the foundation's concrete has hardened, you can lay the surface.

III. 3 shows the frame's installation measurements.



III. 3: installation measurements (side view)

We are happy to answer any questions you may have.

Your **Sport-Thieme** Team